

LYNCH LEADER



IN THIS ISSUE



70T Excavator lands in Dawlish



Electric plant



Safety on site



UK's biggest Hybrid fleet



HVO fuel



Machine Control training



Contents

03

Introduction

04

Dawlish

06

Hybrid Fleet

08

Safety

10

HS2

12

#OnTheFleet

16

Careers

24

Training

30

Sustainability

34

The Big Picture

36

Transport

42

Haulage

48

People

58

In the
community

64

The Future

66

Gallery

Lynch Founder and Managing Director, Liam Lynch, talks about our journey so far this year, and looking to the future...

“2021 has been an exciting time for Lynch so far!

Right now, we need action to positively impact the world we live in. We are putting sustainability at the centre of all our business decisions, investments and actions, to make a better future for us all. It is the responsibility of us all to ensure we work towards this and we’re doing this right now, with new technology and new ways of thinking that help save the environment and lower costs for our customers.

We have been engaging with our customers and supply chain partners to maximise the use of Telematic data, which reduces fuel consumption and unnecessary idling. This allows us to work smarter, and we have examples of customers being able to reduce the number of machines needed by working efficiently. We have also invested heavily in new Machine Control technology, again increasing accuracy and efficiency.

All of this enables our customers to reduce costs, increase productivity, improve fuel efficiency, by getting the job done right in less time. As well as this, our hybrid and electric fleet has grown extensively, and we have the capability to use HVO fuel in all of our fleet.

All of this is happening right now, but we are also working on new ideas and ways of working. We have trialled a new lorry, designed to carry more material per load, reducing the number of journeys. This will reduce pollution but equally importantly, reduce risks associated with People Plant Interface, and the risks for vulnerable road users around HGVs. Whilst some

sites may not be ready for this type of lorry yet, we will continue to work on new ideas just like this one, and we will be ready when the time comes.

The next big thing to work towards will be autonomous machines. We’ll see some machines and sites being controlled remotely, and this again will save on costs and increase safety. This autonomy will be huge for our business, and the world, and we are eager to take it on.

Ideas and innovation are essential to our growth, and we need to be innovative and adaptable so we can continually lead the way by collaborating with our customers and partners. We promote and encourage our teams to come up with ideas and work with us to make them a reality. We are always excited about trying new things but, throughout all of this, we will never compromise on safety, and keeping everyone safe.

Of course, our people are at the heart of our business. We are so proud to have great people, showing respect, with passion and a can-do attitude, all working together as one team, all focused on our vision of being the very best at Plant, Operated and Self-Drive, Haulage and Transport Services. Seeing all of this only confirms in my mind that there is no limit to what we will achieve on this journey.”



Liam Lynch





Sea wall defence in Dawlish sees 70T Excavators in action

We are pleased to be welcoming new Komatsu PC700LC-11 Excavators to the fleet.

These machines started work on Phase 2 of the construction of the new sea wall in Dawlish, Devon.

The Komatsu PC700LC-11 offers maximum efficiency with powerful digging and lifting force, meaning it is ideal for work on the beach, as well as in the compound.

This machine is powered by Stage V technology, complying with the latest emission regulations and leading to a lower environmental impact.

The sea wall upgrade will provide protection to the town and the railway from the rising sea levels and the extreme weather conditions for the next 100 years or more.

The upgrade involves collaborative working between marine, coastal and railways experts. Projects like this will

increase the resilience of the railways, which in turn will improve life for local people and tourists in Dawlish.



We are proud to have been working with BAM Nuttall on the new sea wall for the past year. The acquisition of this new machine will help the customer continue to meet the goals of this unique project.

This supports the whole of the South West peninsula, as the railway line connects 50 towns and cities to the rest of the UK. We take great pride in being involved with this important project, and we look forward to the completion of Dawlish's new sea wall.



**Case study
coming soon!**

Register your interest here



HYBRID FLEET

The biggest hybrid machine fleet in the UK

Leading the way in Plant Hire, Lynch has welcomed a number of brand-new Komatsu HB215LC-3 and HB365LC-3 Hybrid Excavators to the fleet, with more new machines on order.



L-R, Mark Golding (BBV Works Manager), Dave White (Operator), and Merrill Lynch with a 215 Hybrid machine

This will take the total number of hybrid machines in the fleet to over 20 in 2021 – the biggest fleet in the UK.

- Features intelligent hybrid technology designed to lower emissions and reduce the environmental impact.
- Includes a 100% electric swing system, improving cycle times and productivity, and an electric swing motor-generator to capture and regenerate energy during use.



Data shows that these machines offer a 15% fuel saving compared with their diesel counterparts, which offers a saving on operating costs for customers.

Another great feature of this machine is ultra-low noise, which creates a better and

more productive working environment for the Operator, site staff and local community.

This will be the fourth consecutive year that Lynch has invested in hybrid machines, increasing the offerings for our customers. This helps us to work smarter

and allows major projects to reduce their carbon and emissions.

2021 will see Lynch continue to innovate and invest, working with customers and suppliers to deliver leading efficiency and productivity within the industry as the technology evolves.



Watch the HB365LC-3 in action!



Visit I-lynch.com to find out more about our hybrid machines!

SAFETY

Red Zone Safety Training with BBV



Lynch has been onsite with Balfour Beatty Vinci (BBV) at HS2 Long Itchington for a two day, all-things-safety event!

We were joined by over 300 Operators, Managers, and Site Personnel for a complete Red Zone training session with Director Rob Lynch. This focused on safety and highlighted the importance of safe working around plant, and around machinery including a 360 Excavator, and a Hydrema.

These training sessions were completed in small groups of 30. The two-day event focused on everything safety, ensuring that every single one of those 300 men and women would get home safe at the end of the day.



This was followed by an Incident Free Environment Talk from Operator Trainer Chris Kent, about the importance of following toolbox talks, RAMS and safe systems of work, and the consequences of cutting corners and being unsafe.





Thumbs Up Safety Demonstration at Silvertown Tunnel

In the interest of site safety we took the chance to highlight the importance of good practice on site around People Plant Interface, with a Thumbs Up Safety Demonstration to our customer Riverlink JV.

We're proud to be involved the Silvertown Tunnel project, and to be able to work with customers that prioritise safety, through collaboration and innovation.

Safety Stand Down Session at Ruislip Golf Course

We held a Safety Stand Down session on HS2 for SCS JV.

As part of the session, we highlighted the essential safety features on our Euro 6 Volvo 32T Tipper Lorries. These include People Panels, Left Turn alarms, Side Sensors, 360-degree cameras, Direct Vision windows and Proximity Alarms.

Importantly, we also demonstrated where not to stand around the Tipper and Grab Lorry during site movements and operations.



Stand Up Safety Morning at Harvil Road

Lynch took part in a 'Stand Up Safety Morning' at the Harvil Road site in collaboration with SCS JV.

Lynch was invited to cover the Red Zone safety station, and during the session we were able to focus on the importance of safe working around plant.

Safety is our priority

Delivering safety sessions is important because they ensure that we get everyone home safe at the end of the day.



PROJECTS

On board with HS2

Growth on HS2 has driven us to invest in the latest and most up-to-date technology available to help our customers get it Right First Time!

HS2 is a state-of-the-art, high-speed line critical for the UK's low carbon transport future. It will provide much needed rail capacity across the country and

will help to rebalance the UK economy. Lynch has been appointed to carry out enabling works and main works across the project.



SCS HS2 Values Award winner — Passionate About Excellence

We are delighted that Lynch Operator, Dan Cooper, has been recognised by SCS, our customer, and has won the Passionate about Excellence Values Award!

We are delighted that Lynch Operator, Dan Cooper, has been recognised by SCS, our customer, and has won the Passionate About Excellence Values Award!

This award is a testament to Dan's hard work and ongoing dedication to the project. Dan has been working on HS2 on a Roller, and as part of our ongoing innovations, he

has been trialling the very latest Machine Control technology, going above and beyond to get it right.

Well done, Dan! Thank you for your passion and your 'can do' attitude. You and your team continue to make us the best we can be. Thank you also to our great partners, Ardent Tide, for their continued support.

Meet our HS2 Team



James Barden
HS2 Project Manager
South



Tom Law
HS2 Project Manager
North



Lydia Philips
HS2 Key Accounts Manager



Shelby Thomas
HS2 Operator Recruiter
South



Jesse Collins
HS2 Operator Recruiter
Midlands & North



Alex Thomas
HS2 Project Manager
Central



Keep up-to-date with Lynch and HS2

Our latest HS2 booklet will be published this summer! Scan the QR code here to register your interest today or contact us on **020 8900 0000**.



#ONTHEFLEET

New Takeuchi with Height & Slew limiters and the Magenta Beacon



Lynch has welcomed new Takeuchi TB250-2 Excavators equipped with Height & Slew safety systems, to our modern and reliable fleet.

These Mini-Excavators are compact but powerful, perfect for when space is limited. These premium quality machines offer great Operator comfort and allow for maximum productivity.

With Stage V engines, these excavators meet the highest emission standards and help our customers continue their journey to a more sustainable future. The TB250-2 offers improved fuel economy which leads to considerable cost saving and lower carbon emissions, reducing environmental impact.

Fitted with Height & Slew limiters, these excavators meet Highways England's safety standards for Plant Machinery operating near live traffic lanes. Additionally, our Magenta Beacon offers further visible assurance that the system is in full operation.

These machines are already out on hire on the M1 improvement project, carrying out essential motorway upgrades.



Learn more here!



Other new additions to our fleet



70T Komatsu PC700LC-11



Komatsu D61PX-24 Dozer



Volvo Electric ECR25

#ONTHEFLEET



Hybrid Komatsu HB365LC-3



Fuel Bowser 8000/1000

Discover Operated and Self-Drive Plant Hire today!





Komatsu D65WX-18 and CAT D6TXE Dozers



Thwaites Dumper



CAT 308E Excavator

CAREERS

Armed Forces Recruitment

Meet some of our ex-forces personnel...

At Lynch, we are signatories of the Armed Forces Covenant — proudly supporting those who serve.

Here are some of our team members who have served in the armed forces...



Steve Bremner

**Fleet & H&S Director and
Mental Health First Aider**



Craig McCormack

Driver Development Supervisor



Jordan Hayes

Transport Driver





Oscar Alvarez

Transport Driver



Mick Holahan

Transport Driver



Matt Wilson

Transport Manager

And also:

Frances Gillat

Transport Driver

Ex servicemen and women



Your valuable skills can be used here at Lynch!

SCAN TO APPLY





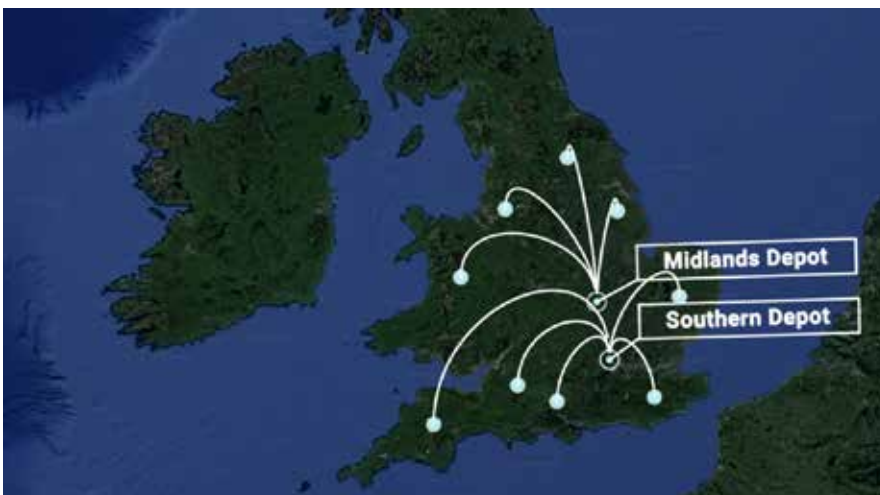
HGV DRIVERS WANTED

**HGV Class 1:
Low Loader Drivers**

**HGV Class 2:
Tipper, Grab, HIAB Drivers**

Our Transport Divisions are based in Hemel Hempstead, Hertfordshire and Rushden, Northamptonshire. We are looking for the best drivers with preferably two years relevant driving experience: Lowloaders, Beavertails, HIABs (both rigid and artic), Tippers, Grabs, Road Sweepers and 7.5T.

Be part of the best team on the road



Scan to apply today!

WORK IN ENGLAND

FULL TIME & LONG TERM OPPORTUNITIES WITH LYNCH
ON THE NEWEST MACHINES WITH THE VERY LATEST TECHNOLOGY

CALL NOW
+44 (0) 20 8733 2024



FULL TIME & LONG TERM OPPORTUNITIES

Major infrastructure projects with
clients like HS2, Network Rail
and Highways England

FIND OUT MORE

Visit l-lynch.com/work-in-england
and Register NOW!



- ✓ COMPETITIVE RATES OF PAY
- ✓ HELP WITH A SMOOTH TRANSITION TO ENGLAND
- ✓ TRAINING AND DEVELOPMENT
- ✓ WEEKEND AND NIGHT OPPORTUNITIES

LLYNCH

Opportunities on **HS2**

Plant Operators, join us on High-Speed Two (HS2)!

5 steps to start your HS2 journey with Lynch:

- Step 1: **CALL** 020 8733 2024
- Step 2: **REGISTER** your details
- Step 3: **ATTEND** Depot Assessment
- Step 4: **ATTEND** HS2 Induction:
Section Specific and Site Specific
- Step 5: **START WORK**



Scan to apply today!



HS2 Route map: we're currently working on Phase 1 – London to Birmingham



Maria working on HS2



Doran working on HS2

Experienced Plant Operators, find work on HS2:

- 360 Excavator Operators
- Dumper Operators
- ADT Operators
- Dozer Operators
- Roller Operators
- Telehandler Operators

Successful Plant Operators must have valid CPCs Qualifications to be considered.

Further training and upskilling opportunities are available if you have a can-do attitude and you want to grow as a Plant Operator.

Call our Recruitment Team on **020 8733 2024** to be a part of HS2, the UK's biggest infrastructure project.



Hybrid on HS2

Careers in Plant Scheme 2021!



We're excited that several groups of Careers in Plant recruits have started their journey into the construction industry.

Our Careers in Plant Scheme consists of ten days intensive training, which allows Operators to gain 3-4 tickets, from an Articulated Dumptruck, Roller, Forward Tipping Dumper or Tracked Dump Truck. They complete theory and gain practical experience on all categories and learn important safety information to prepare them for work.

In addition to their training, they spend a day in the Depot with one of our Operator Trainers, undergoing important Plant Familiarisation. These sessions are designed to give Operators a breadth of knowledge across varied plant — they learn about specific machines, their functionality, as well as important pre-start and function checks.

Gez Bonner, National Training Manager, said that “We’ve designed an enhanced training course that not only provides these individuals with knowledge of plant, but also allows them to see what working on a real live site is like. We’ve carefully selected our training area, so it allows us to adapt and create new scenarios every day, just like a construction site. We will be working with so much varied plant, all different sizes and all different manufacturers, with the aim that all our trainees will come out of the other side ready for whatever we put in front of them.”

The Careers in Plant Scheme is unique to Lynch and we would like to encourage anyone who might be interested in a Career in Plant to get in touch.



Learn more about a Career in plant



National Apprenticeship Week

In February 2021 Lynch celebrated all things Apprenticeships during #NAW21!



Manager, who talked us through our exciting opportunities for Plant Operators and Plant Fitters.

We were able to speak to Sid and Lottie, two Lynch Apprentices who are earning and learning right now.

This year's theme was "Build the Future", and we were excited to share our Construction Apprenticeships.

As well as this, Peter Haddock from Content With Media spoke with Chloe Rackley from her cab, and she gave us an insight into her journey with Lynch so far.

We caught up with Tessa Leigh our National Recruitment Manager, and Gez Bonner our National Training

Find out more about Plant Apprentice opportunities today!



Watch: the Lynch Apprenticeship Journey



YOU'LL BENEFIT FROM:



FRIENDLY TEAM



GUIDANCE & SUPPORT



CAREER ADVANCEMENT



LYNCH PPE



LATEST TECHNOLOGY



PROFESSIONAL DEVELOPMENT

TRAINING

Online Plant Familiarisation

Gez Bonner, National Training Manager, ran a series of online interactive seminars to familiarise CSJV staff working on the HS2 project with the extensive range of plant machinery on hire across the project.



The training was aimed at engineers, project managers, new starters, those who are new to the industry or those who have minimal plant knowledge and provided a walkthrough of the different items of plant, as well as operators, safety and efficiency on site.

This is a great example of collaboration on the HS2 project, and we want to take the opportunity to share our expertise with our customers.

If you would be interested in online Plant Familiarisation, please contact us today.

Manual Handling Training

We are committed to our employees' Health, Safety and Welfare and have delivered a manual handling course to all office and workshop employees.



Paul Lynch, Head of Compliance, said "Not only will manual handling training help increase employees' awareness of risks involved with lifting, but our team can also see that their welfare is priority at Llynch."

Legislation regarding moving and handling is also an important part of the course, particularly in how this relates to our teams' responsibilities in the workplace and our responsibilities to our team.

The course was a success and we received great feedback!



Gradient Awareness Training

Lynch completed successful training on the M4 Smart Motorway upgrade from December 2020 - March 2021 which helped ensure site accidents were kept to a minimum.



The training addresses risks involved with using plant machinery on inclines, such as overturning, slipping and sliding and ground stability. It is suitable for all site personnel across all projects – anywhere with inclines.

One customer gives special credit to Valon Krivenjeva, their trainer: "I wish to thank Valon and Lynch for their help in making the Gradient Awareness Training such a success. Every week, Valon was available to support us, without issue."



Organise gradient awareness training for your site today!





Eco Driver Training

Lynch is committed to protecting our planets' atmosphere through behavioural Eco Driver awareness training

We all have a part to play in keeping our air clean, and at Lynch, this is something that we take very seriously. We understand that it is our responsibility to ensure that fuel consumption is low, and productivity is high. The construction industry is evolving and the need to minimise the impact on the environment is higher than ever.

We understand that one of the best ways that we can make a positive impact is through behavioural change. For over two years, we have been delivering our Eco Driver Training across the UK to our customers, and most importantly to Operators.

Our Eco Driver Training helps Operators to reduce their carbon emissions while working on-site, and covers:

- The importance of Pre-start checks
- Checking each piece of plant is well maintained and safe to use
- Correct warming-up of the machine
- Using correct power modes for the task
- Reducing unnecessary idling and switching the machine off when it is not in use
- Completing correct shutdowns at the end of each shift
- Having an understanding of how the engine works
- Getting the best out of each machine and in-turn lowering emissions and fuel consumption

We will continue to deliver these very important sessions on our customer's sites and to our Operators.

As a company, we strive to be the best at what we do, and we understand the importance of sustainable working. Eco Driver Training is just one of the things that we do to work to lower emissions from our industry. We are proud of the progress we have made so far, and we are excited to work with the industry to make even bigger changes.

To find out more about our Eco Driver Training or to arrange a session on your site, please get in touch.

Two newly qualified Plant Operator assessors

We would like to congratulate Chris Kent and Valon Krivenjeva, who are now fully qualified Plant Operator Assessors.

Chris and Valon have worked with Lynch for over 10 years, beginning as Plant Operators themselves. Their passion and ‘can-do’ attitudes have been evident from the beginning. Gaining this qualification demonstrates their commitment and dedication to develop industry-leading Operators.

Chris explained that “I’m not an academic person, and this was one of the hardest things I have ever done, but it has been worth it. The course has given me a greater

understanding of the processes and guidelines and allowed me to take a more holistic approach when assessing. Also, the fact that I’ve got a nationally recognised qualification has given me a confidence boost.”

Valon said that “working towards this qualification has been tough, especially with English as an additional language. But I felt ready to take the step from Operator, to Trainer, and then to Assessor, and I am grateful to have been supported the whole way

along. I feel more confident in my work now and I am proud that I’m a qualified NVQ Assessor.”

We understand the importance of training and assessment, and so we continue to invest in the development of our Training Team. Every single Operator is assessed in a machine before they start with us, and then again once they are out on site.

Chris and Valon are assets to the team and their hard work continues to drive us forward. Well done!



“Every single Operator is assessed in a machine before they start with us, and then again once they are out on site.”

Valon Krivenjeva



Machine Control Training

Providing Practical Training for more than fifty Plant Operators

Specialist Machine Control training has now been completed by over fifty Plant Operators at our dedicated GPS Training Centre in Cambridgeshire.

This helps them to be able to work safely and efficiently with Machine Control Enabled Excavators, Dozers and Rollers, and is a milestone figure for our Training Division.

The use of Machine Control Technology is becoming more and more common, especially with Highways England mandating this on all of their sites. At Lynch we recognise how important it is to have state-of-the-art technology

paired with a great, fully trained Operator. This way, they are able to work with the system, achieving its full potential.

Chris Kent, Operator Trainer, has been overseeing the training. He wants to ensure that the Operators are fully engaged and have a quality training experience. He explains how the centre works...

“We are pleased to be able to offer a balance of theory and practice as

part of our Machine Control Training Programme. In our dedicated GPS Training Centre, we’ve got a classroom area, which is of course important for the Operators to learn the theory behind Machine Control and the various systems prior to actually getting into a machine. However, what’s most impressive and arguably most important is the practical aspect of the training centre. We don’t use simulators; they won’t prepare our Operators for real work on a

live site. We have working Machine Control enabled Plant, with earth for our Operators to move and to really get familiar with the technology.

Operators undergo a 2-hour classroom session, so they can understand how the GPS system works, how the signal is picked up and transmitted to the machine and how the machine is set up. This allows them to understand the

They then put their knowledge into practice by spending time in a real machine. By the end of the day these Operators have a full understanding of these systems. They haven't been under any pressure, and they have been able to learn by repetition, giving them the basic groundings to take with them out on site.

Another great feature of our training is that it is one-to-one. This means the training is solely focused on them and can be tailored to suit their needs. They get more time



with the trainer and the machine, and so a more effective training session. Ultimately, this makes our operators safer and more efficient when they first go to use the new systems on site."

We are so proud of our innovative Machine Control Training Programme, and the skills that this provides our Operators with.

This means we now have over 50 Operators who have been trained to use this new technology and are ready to hit the ground running when they get onto site. This level of training and detail is unique to Lynch and is testament to our commitment to not only the very latest and innovative equipment, but the development of our great people.



Leading the way to a better and greener future with the UK's first 3T Electric Excavator available for hire



L Lynch Plant Hire & Haulage is proud to be the first UK Plant Hire Company to take delivery of a 3T Volvo ECR25 Electric Excavator with further machines arriving this summer.



We are passionate about our sustainability journey and building a greener construction industry — growing our Electric Fleet is one of the ways we can do this.

We trialled the Volvo ECR25 across three sites, to showcase benefits such as cleaner air and reduced noise pollution which resulted in positive feedback from Operators and the customer.

One of our Operators reported on the performance of the excavator, stating that: “the excavator is powerful, and you barely notice any difference to its diesel counterpart, with smooth hydraulics, grading, tracking and slewing. It is a very good machine.”



We are focused on our sustainability plan, and our carbon footprint as a business. We spoke with SMT GB in 2020, and as soon as we knew these products were available, we expressed interest in trialling it.

Chris Gill



The fully electric design means that there are ZERO emissions around the machine, and the noise pollution is greatly reduced. There are lower vibrations when the machine is working for greater Operator comfort. The machine features a maintenance free battery and a fast-charging option. The machine is also a zero-tail swing, so it's perfectly suited for working in confined spaces.



electric machine, and we look forward to seeing them on our customers job sites, creating great output, with zero emissions!"

"We are focused on our sustainability plan, and our carbon footprint as a business. We spoke with SMT GB in 2020, and as soon as we knew these products were available, we expressed interest in trialling it. We received fantastic feedback from operators and customers on the three separate trials we carried out. To place a multiple machine order with SMT GB makes complete sense."



Chris Gill, Director, explained the reasons why Lynch chose to invest in Volvo Electric Excavators, commenting that: "We are proud to be the first plant hire company in the UK to be running this size

Discover our range of Hybrid and Electric Plant.





Jacksons Electric Plant Technology Demonstration

In the interest of sustainability, Lynch is proud to be able to work with our customers and showcase the very latest plant technology. Steve Sutch, Director, and Keval Dattani, Head of Business Development, were invited by Jackson Civil Engineering to demonstrate innovative electric machinery on site at the Woodford West Viaduct Scheme.

Working in collaboration with TJC Plant, we were able to show off Wacker Neuson's Fully Electric EZ17e Mini Excavator and DW15e Dumper.

These machines offer a more environmentally friendly solution, with ZERO emissions, low noise and vibration levels thanks to their fully electric design.

On site, they were found to be equally productive as their diesel counterparts.

They are also easy to manoeuvre around site, making them the ideal

option for jobs in tight areas. Transportation is also made easier thanks to their ergonomic design and small size. With various charging options, they also make a versatile tool for larger scale jobs.

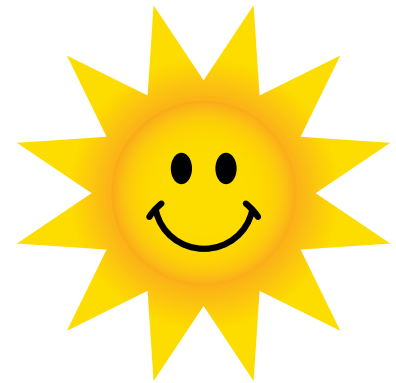
Ryan Smith, Framework Manager for Jackson Civils said: "Zero Emissions machinery means that companies are able to reduce their carbon footprint. Low noise pollution means that these machines are ideal for use in built up areas. Their small size means that they can be easily transported to be charged at the end of the day."



Scan here if you are interested in a demonstration of the very latest plant technology on your site



Powered by solar...



At Lynch we have over 400 solar panels installed on the roof at our Southern Depot. These are generating enough energy to power the entire building's lighting output and supply power to the main grid.

Mains generation of 1kWh of electricity in the UK generates 380 g CO²

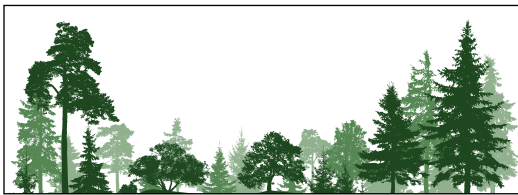
The solar installation at Lynch has saved:

- 3,722 kg CO² in the last month
- 29,312 kg CO² in the last year
- 174,628 kg CO² since the panels were installed.

Our solar panels generate enough energy to brew approximately 23,325 cups of tea every 24 hours



On average over the last month, our solar cells have been generating sufficient electricity to power 35 UK homes.



In the last month our solar panels have saved 3,722 kg CO², equivalent to thirteen trees





PC
700
LC

KOMATSU



LLYNCH

Third Year of FORS Gold

Lynch is delighted to announce that we have received FORS Gold Status for a third consecutive year.

FORS (Fleet Operator Recognition Scheme) is a voluntary accreditation that recognises our fleet is safe and efficient, and that we operate in an environmentally responsible manner. FORS accreditation helps our proactivity and innovation, allowing us to demonstrate our commitment to driver development and constant improvements within our fleet.

Our Transport and Compliance team lead by Steve Bremner – Fleet and H&S Director, and Gabby Lawrence – Compliance Manager,

ensure that we meet the highest industry standards for safety, efficiency, and environmental management each year.

Steve Bremner, Fleet and H&S Director, said: “Retaining FORS Gold gives us a sense-check in our work ethics, quality and sustainability, whilst also targeting our environmental responsibility. Our Compliance Manager, Gabby, has played the lead role in achieving our recertification, showing her passion and dedication.”





Heavy Haulage

Our new Heavy Haulage Lorry joins our FORS Gold Accredited Transport Fleet!

The new machine features:

- Volvo 750/FH16 8x4 Truck
- 2x4 2 Axle Interdolly Trailer
- 360 Camera Systems
- Faymonville Extendable
- Specialist STGO Category 3
- Left Turn Alarms

With a 100T payload, this lorry can move oversized machines and abnormal loads. Lynch Transport provides fast and efficient movements of plant, materials and other heavy specialist loads across the UK. If you need to move a heavy machine, contact us today on **020 8900 0000 Option 4** or visit l-lynch.com



Driving Lynch Forward

Last issue, we introduced you to the brand-new initiative to help drive the professionalism of our team, while lowering CO² and raising miles per gallon: 'Driving Lynch Forward'.

This issue, we are pleased to announce our winners...



The Winners

Haulage

Best MPG Overall:
Gheorghe Tyirean

Best Improved MPG:
Terry Buchan

Second Place:
Adrian Lamansanu

Third Place:
Andrei Aldescu

Colleague Award as voted
by the Driving Team:
Richard Hearn

Colleague Award as voted
by the Management Team:
Vincent Sherlock

Best Weekly Improvement:
Terry Buchan



Grabs

Best MPG Overall:
Alan Henderson

Best Improved MPG:
Andrew Hughes

Second Place:
Stelica Gheorghe





Transport Southern

Best MPG Overall Improvement:
Mick Holohan

Best 7.5t:
Ken Tobin

Best Improved Low Loader:
Paul Alridge

Colleague Award as voted
by the Driving Team:
Shaun Gilsenan
and **Mick Holohan**

Best Low Loader MPG:
Vlad Vamesu

Best Improved HIAB:
Saul Mingalia

Colleague Award as voted
by the Management Team:
Shaun Gilsenan
and **Mick Holohan**

Best Improved Rigid:
Philip Langley



Transport Midlands & North

Best MPG Overall Improvement:
Anselmo Giammarco

Best Improved Rigid:
Callum Langford

Best Improved Low Loader
Volvo: **Matt Payne**

Colleague Award as voted
by the Driving Team:
Des Jones and **Roy Varnfield**

Best Improved Low Loader
Renault: **David Hourd**

Best Improved HIAB:
Oscar Alvarez

Colleague Award as voted
by the Management Team:
Roy Varnfield



Driving Lynch Forward

spotlight on Callum Langford

Callum is a 30-year-old husband and father from Thrapston, Northamptonshire and he has been driving with Lynch since February last year. We caught up with him to find out more about his professional driving career so far.

What were you doing before you chose a professional driving career?

I was a forklift driver for a flooring distribution company, and before that, I was working for Wickes.

Why did you choose lorry driving?

I have friends that drive lorries for a living, and they recommended it to me because there is always

work, it's varied and there are plenty of entry routes. My wife also encouraged me take the plunge and make a career out of lorry driving.

Why Lynch?

They were highly recommended to me by my mate James Hibbert, who had already been taken on the year before. He had completed

his training and he was absolutely loving his new career. I called and spoke to Craig, who invited me in for a chat and driving assessment. It was decided that I would start on February 10th, 2020.

What have you learnt during your time at Lynch so far?

Absolutely everything I need to in order to do the job I do today.

Vehicle familiarisation, safe and efficient driving, and how to stay legal on the road which is so important for me and Lynch. You really need to know your stuff when it comes to EU driving and the working time directive, and it's easier to understand with the right training and support.

“

Once you've got the skills and you are safe in your actions then you are given your work and you get on with it. Of course, you report to the office, but you are treated like an adult and you are responsible for your own day.

”





Being safe is key to everything we do, so I did my CSCS health and safety test first. After this, I got my A50 and A68 CPCs qualifications, followed by FORS, again with the help and support of the training team.

I only have my NVQ left to complete and then I will be fully qualified and up to speed.

What is your favourite thing about the job?

Freedom and being able to get on with my days' work, as I want. Once you've got the skills and you are safe in your actions then you are given your work and you get on with it. Of course, you report to the office, but you are treated like an adult and you are responsible for your own day.

I like going to different places and meeting new people, and so the interaction is great. It is always fresh, and each day is different than the next.

What would you say to anyone considering a job as a professional driver?

I would say: do it! Yes, it can be long hours, yes, it can be hard graft with early mornings and late evenings, but you will always have a job, you will always be able to put food on the table, and a roof over your head. It's the best decision that I have made to date, and for me all of the positives far outweigh any negatives.

Would you recommend Lynch to anyone considering a career in transport?

100% yes! I have been nothing but supported since being here. The way I've always been encouraged, even when I lost a bit of confidence, and the way the training has been is great. Step-by-step, bit-by-bit, you feel yourself growing and becoming a more rounded professional driver. Thanks to Lynch, that's what I am now: 'a professional driver'.

I fit into a team of other drivers, who, along with Craig, help and support me.

HAULAGE



Sustainable Haulage and Muckaway methods

At Lynch, we are committed to innovative and sustainable Haulage methods, whether it be with our muckaway services, or the aggregates that we deliver to site.

Since January 2021 we have:

- Carried out 11384 movements
- 9168 were waste removed from sites
- 2216 were aggregates delivered to sites

99%+ of all waste removed from sites was either reused or recycled locally.

81%+ of all the aggregates we delivered to sites were from recycled sources.

Lynch appreciates the importance of responsible and sustainable waste management, and so we embrace and support recycling methods like these. This is just one of the ways we are working to contribute to a greener Construction Industry and a brighter future.

Find out more about our Haulage and Muckaway services!





Vulnerable road users - at the heart of our new investment



Scania Low Entry Urban Tippers added to the Fleet

Lynch has invested in brand new Scania Low Entry Urban Tippers, primarily for muckaway use on projects in and around London. These Tippers help to support TFL Direct Vision Standard and our collective ambitions to improve safety for all road users.

Scania's Low Entry design means that they are more accessible for drivers - reducing the risk of slips, trips, and falls. Driver visibility is

greatly improved, thanks to the lower cab and wide view from the driver's seat. Access to site and adverse terrain is assisted thanks to factory-fitted air suspension: raising the cab by 120mm.

Steve Bremner, Fleet and H&S Director stated: "Providing the best possible service to our customers means investing in the safest and most efficient vehicles. Scania's L-series design has



The new Lorries are fully fitted out to the highest specification, including:

- > **TFL 5 Star Direct Vision Rating including Scania City Safe Window**
- > **Euro 6 Engines**
- > **ULEZ Compliant**
- > **Meets the FORS Gold Standard**
- > **Advanced Driver Assistance Systems**
- > **Left Turn Alarms to alert VRUs**
- > **360 Camera System (forward, nearside, offside, rear and load security)**
- > **High Voltage Alarms**
- > **Exterior Sink Unit**
- > **Night Heaters to reduce idling time**

... and much more.

enabled us to achieve the highest possible TFL Direct Vision Standard rating and support our collaborative goals of improving road safety in urban environments. The driver's visibility of the road ahead, vulnerable road users, site operatives and other hazards is dramatically increased."

We are excited about being part of this journey to make London's streets safer. Our Drivers have already covered 10,000 miles in these new Tippers, and we have showcased the features and benefits of these Lorries at the London Zoo Lorry holding bay – feedback has been positive.

We would like to thank everyone involved in making this goal a reality!

To find out more about our new Low Entry Urban Tippers, please contact our Haulage Team on 020 8900 9992.



Our Haulage Fleet



Find out more about our Haulage and Muckaway Fleet!



HAULAGE

Crossrail at Easter!

Over Easter our Haulage team was pleased to work on the Crossrail Enabling Works in Bethnal Green, London.

The works are taking place to lengthen platforms, needed to allow for longer Crossrail Trains. 432 Tonnes of contaminated soil was moved from the worksite to the Access point by train, where our 15T Operated Excavators emptied the carriages and loaded the material into our Tippers.

We supplied 8 Tipper Lorries on rotating 24-hour shifts, starting from midnight on Easter Saturday, and finishing at midnight on Easter Monday. We collaborated with a soil treatment facility in East London to remain open throughout this period, enabling the works to take place.

With our Management Team on hand and our Supervisors coordinating Drivers on each shift, these works were a great success. We would like to thank everyone involved for working hard over Easter to make this happen!





HVO on HS2

In the interest of sustainability, we are proud to be using HVO fuel in our Tipper Lorries at a busy HS2 site.

HVO (Hydrotreated Vegetable Oil) fuel comes from 100% renewable sources. Among many sustainability benefits, this fuel in our Scania 8 Wheel Tipper lorries is set to reduce emissions by up to 90% compared to standard diesel.

Benefits include:

- It contains ZERO Fossil Fuel
- It eliminates CO2 emissions by up to 90%
- It significantly reduces NOx, PM and CO emissions
- It is biodegradable and non-hazardous if spilt

Elayne Junak, National Haulage Manager said: “HVO fuel offers our customers an environmentally friendly alternative to standard diesel. Cleaner air on site and on our highways is great for everyone.”

Lynch has collaborated with HS2 Site Managers to begin using this eco-friendly alternative to diesel. These lorries are out moving material to and from HS2 sites right now. This helps us to reduce environmental impact and is a great step forward in our sustainability journey. With regular reporting, we will be able to monitor the benefits of using HVO fuel in the short term and in the longer term.



PEOPLE



Welcoming New Starters

Iram Mahmood **Payroll Manager**

Iram is AAT Qualified, is working on a CIPD HR course, and she joins us from a building contractor, where she worked on HR and Payroll.

Alexandra White **HR Practitioner**

Alex previously worked with Skanska in the Occupational Health and Wellbeing Team and is studying for a Level 5 Diploma in HR Management.

Holly Rankin **Recruitment Administrator**

Holly comes from a sales admin background, is working on a CIPD course, and she enjoys looking after her horse in her spare time.

Ben Cross **Head of Strategic Performance**

Ben has worked closely with Lynch over the past 5 years on the award winning A14 project, and is focused on our people and our team.

Tom Hubbard **IT Support Technician**

Tom has a First-Class degree in Cybersecurity and Digital Forensics and previously liked building, repairing and selling computers in his spare time.

Steven Manley **Machine Control Support Engineer**

Steven joins us from Komatsu where he spent over three years working in their Machine Control team.

Harry Bragg **Credit Control** **Key Accounts Assistant**

Harry previously worked as an Insurance and Contracts Administrator for a Building Management company and a Site Coordinator for a Construction company.

Maisey O'Connell **HS2 Administrator**

Maisey joins us from a sustainability company where she worked in Sales and Business Development.

Andy Freshwater **Depot Manager**

Andy has 36 years Plant Hire experience, from Depot Manager to National Plant & Fleet Manager at companies such as Select Plant, A Plant, Breheny Civil Engineering and Caulfield Contractors.

Leeny Power **Service and** **Transport Administrator**

Leeny has worked in construction, specifically mini piling and restricted access, for the last four years, which followed on from ten years in recruitment.

Shonah Wakefield **Senior Hire Controller**

Shonah joins the team from Mick George Ltd as a Hire Controller, and has over 20 years Plant Hire experience.



Marc Willetts
**Purchase Ledger and
 Credit Control Assistant**

Marc not only worked on accounts for his previous company but he would get 'stuck in' in the warehouse as well.

Richard Howe
Service Manager

Richard started as a Plant Engineering Apprentice and has since managed operations for companies like Finning CAT, Greenshields JCB and Marubeni-Komatsu.

Charles Houslow
Depot Manager

Charles joins us as Rushden's new Depot Manager, bringing with him a vast range of skills from IOSH, to an NVQ in Hire Rental Operators. He is a Mental Health First Aider and in his spare time enjoys dog walking, angling and marathon running.

Reece Hillier
BI Developer

Reece is a Mathematics Graduate and previously worked for the *Sun* and *Times* newspapers, creating interactive data dashboards.

Kevin Yip
Full Stack Developer

Kevin joins the development team and will be working on a range of projects. He brings a wealth of experience with him from his previous position and is looking forward to the Lynch challenges.

Kayleigh Goldsmith
Events Marketing Manager

Kayleigh has worked in events management for over 10 years, spanning hospitality, charity sector and the motor industry.

Julie D'Amato
Purchase Ledger Assistant

Julie has worked in Hire and Ops, Damage Claims and Purchase Ledger and when she's not at work she loves to be out in her garden.

Hannah Briggs
Recruit/Resource Administrator

Hannah studied customer service and business in school and then went on to do two apprenticeships in Business Administration. Since then, she found a passion for working in recruitment in a customer focused environment.

**View our vacancies and
 apply to join our team today!**



PEOPLE



Lynch joins Building Equality

Lynch is excited to share that we have joined Building Equality: the alliance of construction workers and institutions passionate about collaboration and harnessing our collective power to drive LGBTQ+ inclusion in construction, engineering, and built environment industry.

Joining Building Equality helps us to take the work we have been doing to the next level. This means we can make a bigger impact, educate ourselves and our teams, allow everyone to thrive at Lynch, and be the best they can be. Everyone can contribute to our ever-growing industry as part of the Lynch team, regardless of age, disability, ethnicity or race,

gender, religion or belief, and sexual identity.

We are the first Plant Hire Company to join Building Equality, leading the way for others in our industry. Right now, we are just at the beginning of our journey, so stay tuned and we looking forward updating you on our progress.



“We are really proud to have joined this amazing collaborative alliance, working alongside some of our great industry colleagues. We are looking forward to driving change across the industry and working with our great people to be recognised as the best at what we do. Our people are our best asset, and joining this alliance is a testament to that.”

Merrill Lynch, Director

Women in Construction Webinar

Lynch was invited to the Highways England Diversity Data workshop, alongside HS2, Network Rail and TFL.

Tessa Leigh Allen-Ridge, National Recruitment Manager and Gez Bonner, National Training Manager represented Lynch at the webinar.

They spoke about women in construction, and what we do to attract and train women in our business.

As part of the webinar we were able to spotlight four of the great women that we have working on site with

us. Plant Operators Chloe, Dayna, Lottie and Maria all shared an insight into their journey and their positive experiences with Lynch.

The average percentage of women making up the workforce for SMEs in the Construction Industry is 17%.

Lynch is proud that its workforce is 32% female, and this will grow as we continue our work on major infrastructure projects.

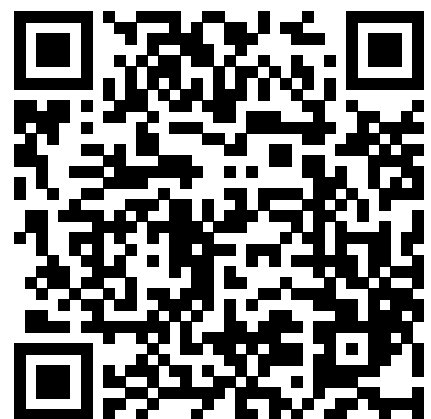


“The change in construction is fantastic to see. It’s very evident on our major projects that the opportunities are becoming more widely available for everyone to join our ever growing sector. It is also very rewarding to see our statistics on diversity at our workplace.

We hope more great women will follow their footsteps into construction.”

**Gez Bonner,
National Training Manager**

Visit our Operator page now to apply to work with us!



PEOPLE

10 year milestone!

Craig Long, Haulage Sales Manager, has been with Lynch for Ten Years this year!



Craig started in February 2011 as Haulage Administrator, raising jobs on the system and responding to customer enquiries. When the Railhead opened in late 2013, he spent six months on the weigh-bridge, before returning to the Haulage Team. He then began working as Haulage Manager, alongside Elayne Junak, and has helped to oversee the continued growth of the Haulage Division.

Craig told us his favourite thing about working for Lynch is “the family feel about the business, and most of all the fact that every day has its challenges. It’s never boring and there is always a great sense of achievement at the end of the day when you know you have put the customers first and have helped them achieve their goals.”

Thank you, Craig!

Enhanced training success for one of our apprentices

Sid Verrill continues his development with Enhanced Training!

Sid is an Apprentice Plant Operator, working on HS2. He has made a strong impression during his time with Lynch so far, with our Training Team and our customers.

He underwent Enhanced Training with Chris Kent, Operator Trainer, allowing him to gain more experience on a 360 Excavator. Part of the training involved a series of tasks set to test and to challenge, including digging to a two-stage batter, and digging a service trench.

Chris Kent, Operator Trainer commented that “When Sid took to the controls, he had a clear understanding of the task in hand. He took on board our advice and made good progress throughout the day. Given more time in the

seat he will mature into a great Operator. He has a real ‘can-do’ attitude, and is passionate about his work and safety.”

“Sid has got all the qualities to be one of the best Varied Plant Operators we have. He fully understands what is expected of him on-site and he is very safety-minded. The additional Enhanced Training is helping to build his skillset and I can see him going far in the industry.” said Gez Bonner, National Training Manager

This training will help him on his journey to becoming a great Operator with real technical skills. He’s got the basics and we will continue to nurture his professional development. Sid’s exceptional



attitude combined with his training will help him to go even further and to be the very best he can be.

Thank you, Sid! Your journey in plant continues.



Thank you Steve Dennehy

Surjit Bansal, Purchase Ledger Manager, and the rest of the team would like to say a big thank you to Steve Dennehy! Steve went above and beyond to help the team out when they worked from

home during the lockdown, helping them to run smoothly and saving them a lot of time and effort.

Thank you for being a great team player, Steve!

Recognition for ‘Being the Best’

Paul Smith has been a Varied Plant Operator with us for many years and is a great example of one of our people being the best he can be.

Paul shows his passion and can-do attitude in his work every day. A solid team player, he has respect for his work and everyone he works alongside.

Paul is currently working in Windsor on the Black Potts Weir Project, which involves essential repair works to the final weir on the Jubilee River scheme. This operates to reduce flood risks for residents in the area.

Adrian MacDonald, works manager for BAM Nuttall, had some kind words to say about Paul.

“Paul is one of the finest Operators I have worked with. His skill and ability as an Operator is superb, especially given the small footprint on the barge that he has to work in. As the project progresses to

the next phase, dredging and placing over 4000T of rock armour, we know that Paul will be pivotal to carrying out the works. He will be dredging from the pontoon with a Long Reach Excavator, and then with a second pontoon, placing the rock armour using a 50T Heavy Excavator fitted with a rock grapple. Because we can only do one exercise at a time, Paul will be operating both machines.

It isn’t just Black Potts Weir. Paul was with us at Newhaven Bridge works, operating several machines there and we would like to take Paul with us on our next project, where there will be dredging and grading the rock to profile the new slipway works, on a 70T Excavator from a floating pontoon in relatively deep water.



As well as his great work as an Operator, Paul lives on site with us. We spend time together, we have dinner together, he is a big part of the team, and his opinion is always valued.”

Thank you for your hard work and dedication Paul.

Advocating mental health and wellbeing, in addition to physical safety in the industry

Rayon Brown, Plant Operator, has gained his Mental Health First Aider qualification!



Rayon is a big advocate for health and wellbeing, and he has seen first-hand the impact that negative mental health has on some colleagues in the industry. His goal is to create an environment on a construction site where people are free to express their feelings and talk about any challenges that they may be facing, with no judgement.

Rayon has completed some briefings on-site, helping to facilitate conversations about mental health. This has been well received on-site, and he is scheduled to talk to the safety manager about stress management.

“The course has helped to raise my awareness and taught me to keep my eyes open, to pick up on any subtle changes in behaviour. If I can speak to people before it gets out of control, I can help them. Talking about Mental Health is important in an industry where historically, communication hasn’t been the greatest.” Rayon explained. “We should not just consider the physical aspects of safety, we should consider the mental aspects too.”

PEOPLE



Happy retirement Angie!

Today we say goodbye to Angie Wicks, Payroll Manager, after more than 20 valued years of service. Angie joined Lynch in 2000, and has been instrumental to our growth over the years.

We would like to say thank you to Angie for her hard work and unwavering determination. Our work and success is built on great people like her.

We wish her all the best and we hope that she enjoys her retirement with her family. She will certainly be missed.

Farewell to Andy Burrows



Andy Burrows (left) with Director Stephen Bremner

Everyone at Lynch has said a fond goodbye to Andy Burrows after many years of valued service.

He has played his part in our success, and he will no doubt be missed. We would especially like to send our thanks for Andy's hard work and dedication to the safety of people throughout the pandemic.

We wish him the very best in his new venture.

Transport Team success

Spotlighting the successes of the Lynch Transport Team!

We have a vision of being the best and to do that we have to focus on helping our great people be the best they can be. In return, this provides a great service for our customers, and there is nothing more we like to do than celebrate our amazing peoples' success.

Lisa Doig, Transport Administrator, works closely with our customers and shows her passion and her can-do attitude in her day-to-day work. Most recently, Lisa has been instrumental in setting up new accounts and bringing new customers on board, including Barrier Services Limited.

Shaun Gilsean is one of our great Transport Drivers, he has gone above and beyond for our customer, and his efforts have been recognised on the M1 Junction 13-16 works.

Gavin Hayden, Contracts Manager for Barrier Services Ltd, said

"It really has been a pleasure to have Shaun working with the guys on site. He is incredibly helpful with the method of works that we are using. He carries out his task safely and efficiently, is on time to the yard every morning and is fit for the day's tasks, effortlessly ensuring that the needs of the crews on site are met."

Thank you, Lisa and Shaun!



“Both Lisa and Shaun have made an outstanding contribution to Lynch, and they demonstrate our key values every day. We know how important our great people are to our success as a business, and people like Lisa and Shaun have a really positive impact on the way we work.”

Steve Bremner, Fleet and H&S Director

Careers in Plant Operator Iain Campbell was featured in HS2's newsletter (below) discussing his experiences throughout the pandemic and training with Lynch.

Meet some of the people working on HS2



Iain Campbell
Plant operative, EKFB



'The training has been a fantastic opportunity'

"I was made redundant last May from my job as a data centre team manager having worked in IT for over 30 years," says father-of-five Iain Campbell.

"Covid meant everywhere just shut down and I couldn't find another job. I was applying for about three jobs a day... it was mentally challenging, almost to the point where I was close to suffering depression.

"I hadn't thought about construction before and then I saw a news report about EKFB offering free training, so I

looked it up on the website. The chance to drive big machines floated my boat. If you look at the bigger picture, there's a lot of construction projects around, so there's going to be plenty of work.

"I did the articulated dump truck training with provider Apple Construction. I was a bit nervous about operating a 20-tonne machine, but I took my test and got my ticket. I'm now working with L Lynch Plant Hire who put me through further training, so I'm now qualified to operate a roller, forward tipping dumper and track dumper.

"I'm still getting used to construction but the job I'm on now is brilliant. It's a massive infrastructure project and I'd love to do more on HS2. The training has been a fantastic opportunity. I'd almost eaten up all my redundancy money. If it wasn't for HS2 and EKFB, I would still be unemployed."

More than 700 people who were jobless or had never worked in construction have gained industry standard experience through the EKFB training hub.

Used with permission from HS2 and EKFB.

PEOPLE



Lynch Nominees

The CPA Stars of the Future Awards reward our industry's outstanding apprentices and trainees, recognising the skills and ability they show in their work and their learning.

We are delighted to be able to introduce you to this years' nominees, who all do an amazing job! We are so proud to work with all these individuals who show

passion and a can-do attitude every day.

The awards will take place on September 14th... good luck to all!



★ Amy Wicks ★



★ Danny Walden ★

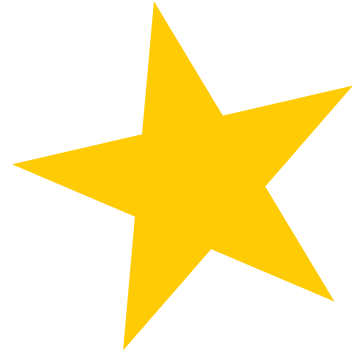


★ Sid Verrill ★





★ Danny Wooder ★



★ Chloe Rackley ★



★ Bradley Cannell ★



★ Jonjo O'Byrne ★



★ Jim Baraclough ★

IN THE COMMUNITY



Help the Homeless Day

On a cold December Sunday, the Lynch Management Team helped homeless members of the public, as part of an event organised by the HS2 SCS Railways, Area East team.

Everyone who took part worked incredibly hard to deliver 300 hot meals and essential items to homeless people within the London borough of Camden. Directors Steve Bremner, Rob Lynch and Steve Sutch were among those in attendance, helping distribute supplies.

Lynch sourced over 300 essential items: toothbrushes, toothpaste, blankets, woolly hats, thick socks and more to help people keep warm and feel like they are not alone. We dropped supplies to the site in Euston earlier in the week in the all-electric minibus, all ready for the weekends' event. Any of the supplies that were left over from the day were donated to the local foodbank in Euston for distribution to people in need.

Steve Sutch said: "This joined-up approach enables us to deliver more together than we could individually, boosting outcomes

for local people, ensuring that communities along the route are benefiting from investment in HS2 and helping Britain's post-pandemic economic recovery."

The whole event was a great example of why collaboration is so important. Everyone demonstrated incredible teamwork and the whole supply chain came together to achieve something good. We are very honoured to have been a part of this, and we welcome the opportunity to give back to the community and help those in need.



Netley School lorry safety day

Lynch had an exciting day at Netley School, talking to 400 students about everything road safety. Craig McCormack, Driver Development Supervisor, and Rob Lynch, Director, spent the day with groups of children outside the school, showing them the lorry and talking with them about how we stay safe on the roads.

The children were excited to see the lorry parked outside their school, to see what it looks like, to hear the sounds it makes, and to learn what those sounds meant for them. As well as this, they were even more excited to be able to sit in the driver's seat of the cab. This helped them to see what the drivers can and cannot see and understand the road from a driver's perspective.

Craig McCormack explained that "the message was focused on how the children can help our drivers to keep them, and their families, safe. We spoke to them in a way that they could understand, we asked questions about what they thought,

and we kept them engaged. As a national provider of transport services, we need to be able to engage with communities about road safety, and to keep children safe on their way to and from school. It was great to see the children so interested in road safety."

We were invited by SCS JV to innovate and drive the message of road safety.

"The day went very well and wouldn't have been possible without Lynch. Both Craig and Rob were knowledgeable and had a passion and presence around them which engaged them with



the children. The feedback from the school was very positive and they understand the benefit of these events and the important message that is conveyed." said Brett Westbrook, Area Logistics Manager for SCS

We received great feedback from the school, with Deputy Headteacher Gareth Morris saying "Thank you for organising such a fabulous day. Really amazing road safety and so practical for the children to understand. Both the children and adults loved it."

Engaging with local communities is so important to us, and we look forward to being able to do more in the future.

Silvertown Foodbank Donation

In place of traditional Christmas gifts, our customer Riverlink JV asked for donations for the local foodbank, to help to support those in need from the community over Christmas.

Lynch is proud that together with others on the project, we were able to give over £400 worth of donations that were gratefully received by the Woolwich Common Community Centre.



IN THE COMMUNITY



London Zoo Community Engagement Day



Lynch is committed to being the best neighbour that it can be and having real, actionable, two-way conversations with community stakeholders is a great way that we can achieve this.

We drove a community engagement day at London Zoo, to show our neighbours what sort of vehicles would attend the HS2 sites in Camden, and the controls that the site teams have in place.

Rob Lynch, Director, Craig McCormack, Driver Development Supervisor, Craig Long, Haulage Sales Manager and Julian Cutas, Transport Driver were joined by representatives from the

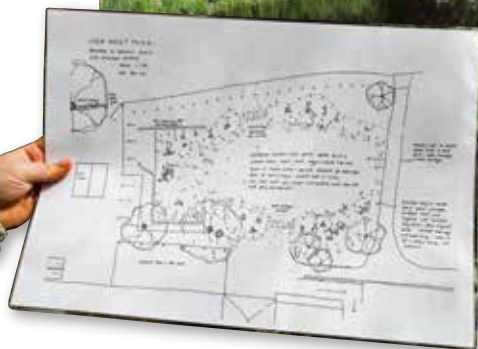
Royal Parks, the Metropolitan Police and a local school.

We understand that community is key on all projects, and we will strive to interact with all stakeholders, community, supply chain and site teams, to increase value and grow as a team. We are better together.

Iver Environment Centre gets help to move 100 tonnes of subsoil

Lynch is delighted to have been able to work with SCS JV to help the Iver Environment Centre by lending them a 1T Dumper for use on their new wildflower meadow landscaping project.

visitors who come to enjoy the outdoors and reconnect with nature, as well as creating ecosystems for the local wildlife. Having the Dumper lent to us helped us to allocate much needed funding elsewhere in our project.”



The Iver Environment Centre is currently restoring their large wildlife pond, and as part of the work a section of the pond is to be filled in, creating a ‘wildflower meadow island’. The centre needed to move 100 tonnes of sub-soil from their car park to the main site, and access was too narrow for a tipper. The soil will be laid within the next couple of days, ready for the seeding in the Autumn.

The centre is an important part of the local community and hosts many visits throughout the year. People with physical and mental disabilities can come for Horticultural Therapy, which can really aid in their recovering and wellbeing. The centre provides environmental education for primary schools in the South

Bucks, Hillingdon, and Slough areas, providing children with the opportunity to learn about their natural environment. Secondary age children can come to the centre and volunteer, teaching social responsibility, and allowing them to spend time outdoors.

Katy, who runs the wildlife centre explained to us the importance of the new wildflower meadow, commenting “This will create more open spaces in the centre for

Lynch has been working closely with SCS JV on HS2 enabling works near the Iver Environment Centre, and so we were pleased to be able to give something back to the local area and help where we can. Community engagement projects like these are so important to us and we are passionate about seeing real benefits to local people.

For further information on the centre, please visit: iverenvironmentcentre.org



IN THE COMMUNITY



L LYNCH



TROPHY 2020/2021

Saturday 20th March was a great day for British Basketball, as the L Lynch Trophy Final match took place, and this was streamed live on the Basketball England YouTube channel.

Following the Semi-Finals, the final saw Solent Kestrels take on Thames Valley Cavaliers at the Morningside Leicester Arena at 6 pm. This was an exciting encounter between two of the best teams in the National Basketball League's top flight.

Sixteen teams entered the group stages back in October, and Lynch was excited to be a part of both the Quarter-Final and Semi-Final draws.

Russell Levenston, representative of NBL Division 1 clubs said that "It's been great to work with NBL Division 1 clubs, Basketball England, L Lynch Plant Hire & Haulage and Five Star Trophies to create a basketball tournament that has seen over 80,000 views on the live streams. Thank you to everyone who has helped and supported the success of this competition."





Scan to watch the final!



Before the match, Max Rossi, Marketing Manager said: “We are excited about Kestrels and Cavaliers coming head-to-head at the Morningside Arena this weekend for the final. Players have been working hard to get to where they are and we are proud to be cheering them to win. It means a lot to

us to be involved in the sport. So much time and effort has gone in to make this final a reality — it will be an awesome game to stream live. Let’s see who’s going to be taking the L Lynch Trophy home!”

The Trophy and the Medals were sponsored by Five Star Trophies.



The Future

Ben Cross, Head of Strategic Performance, speaks to us about the future at Lynch...

“We have an unbelievably exciting future here at Lynch and at the very heart of this are our amazing people. You are all achieving our vision of **‘being the best’** by role modelling our values, which are:

- Can Do
- Passion
- One Team
- Respect

As a business, Lynch is investing heavily into customer centric thinking and delivery to ensure that we understand our customers’ needs better than anyone else. But, more importantly, we want to show them that we understand them through everything we do, because it’s real. To do this well, our greatest focus area is attracting, developing and retaining the best people — we know that when we look after our people, they will look after our customers.

We are building upon an amazing 40-year history and designing the way we work to unlock our people’s collective potential. We are seeking and nurturing limitless mindsets that create an environment where we work as one team, to deliver the best customer service possible.

Our passion for performance and growth is clear to see but increasing our team’s ability to be agile, and always learning new and better ways of working will take us to a much high level of performance.

2021 has been a hard year for everyone and we are determined to make the future a better place. We will do this through our strategic focus area of sustainability, where we will empower our teams to maximise impact in the following areas:

Health & Safety and Wellbeing

of all our amazing people

Community Investment

being a better neighbour everywhere we work

Equality, Diversity and Inclusion

not only for our own people but anyone who experiences the Lynch Service

Environmental excellence

and the impact we have on our planet today, tomorrow, and long into a better future

Ethics

we are so proud of the way we do work, we will continue to raise the standards of what responsible and ethical business looks like”

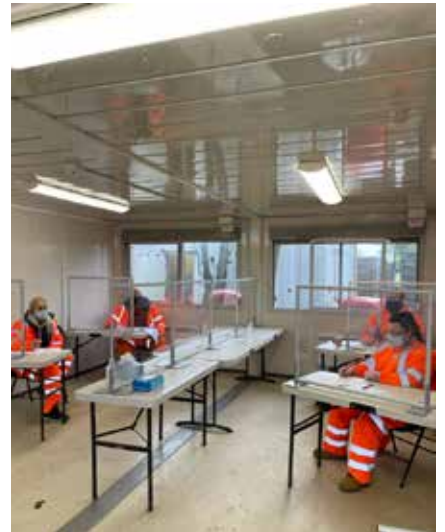
The future is bright, and we are on a mission to achieve our vision of ‘being the best’ at everything that we do, and for our people to be the very best they can be.

Together, we can achieve more.



Gallery





DISCOVER MACHINE CONTROL

A complete end-to-end solution



Lynch Machine Control is designed to support Operators using plant machinery to get the job done right first time.

[TO FIND OUT MORE VISIT](#)

l-lynch.com/machine-control

LLYNCH

Boundary Way, Hemel Hempstead HP2 7YU
Tel: 020 8900 0000 www.l-lynch.com

